

2026 Collection Schedule

January

S	M	T	W	T	F	S
				1	2	3
4	5	6	7	8	9	10
11	12	13	14	15	16	17
18	19	20	21	22	23	24
25	26	27	28	29	30	31

February

S	M	T	W	T	F	S
1	2	3	4	5	6	7
8	9	10	11	12	13	14
15	16	17	18	19	20	21
22	23	24	25	26	27	28

March

S	M	T	W	T	F	S
1	2	3	4	5	6	7
8	9	10	11	12	13	14
15	16	17	18	19	20	21
22	23	24	25	26	27	28
29	30	31				

April

S	M	T	W	T	F	S
			1	2	3	4
5	6	7	8	9	10	11
12	13	14	15	16	17	18
19	20	21	22	23	24	25
26	27	28	29	30		

May

S	M	T	W	T	F	S
					1	2
3	4	5	6	7	8	9
10	11	12	13	14	15	16
17	18	19	20	21	22	23
24 31	25	26	27	28	29	30

June

S	M	T	W	T	F	S
	1	2	3	4	5	6
7	8	9	10	11	12	13
14	15	16	17	18	19	20
21	22	23	24	25	26	27
28	29	30				

July

S	M	T	W	T	F	S
			1	2	3	4
5	6	7	8	9	10	11
12	13	14	15	16	17	18
19	20	21	22	23	24	25
26	27	28	29	30	31	

August

S	M	T	W	T	F	S
						1
2	3	4	5	6	7	8
9	10	11	12	13	14	15
16	17	18	19	20	21	22
23 30	24 31	25	26	27	28	29

September

S	M	T	W	T	F	S
		1	2	3	4	5
6	7	8	9	10	11	12
13	14	15	16	17	18	19
20	21	22	23	24	25	26
27	28	29	30			

October

S	M	T	W	T	F	S
				1	2	3
4	5	6	7	8	9	10
11	12	13	14	15	16	17
18	19	20	21	22	23	24
25	26	27	28	29	30	31

November

S	M	T	W	T	F	S
1	2	3	4	5	6	7
8	9	10	11	12	13	14
15	16	17	18	19	20	21
22	23	24	25	26	27	28
29	30					

December

S	M	T	W	T	F	S
		1	2	3	4	5
6	7	8	9	10	11	12
13	14	15	16	17	18	19
20	21	22	23	24	25	26
27	28	29	30	31		

Legend

- Christmas Tree Collection
- Domestic Waste Collection

- Recovered Waste
- Organic Waste

- Branches Collection
- Bulky Waste Collection



Small actions for big changes!

Household waste is now collected every two weeks at all times, as the City aims to implement solutions to optimize residual materials management and improve the environmental impact of our community.

Our objective

In Sainte-Anne-de-Bellevue, only 43% of residual waste generated is recovered. By 2026, our goal is to have 70% of residual materials recycled.

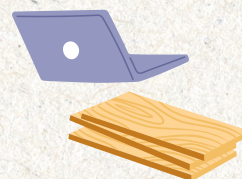


Waste Bins Management

Place your bins as close as possible to the sidewalk or street before 7 a.m. on the day of collection or starting at 7 p.m.* the night before.

The materials must be placed in bins (and not just in bags)

*9 p.m. for residents of Sainte-Anne Street, between Église Street and Montée Sainte-Marie.



Construction and Electronic Waste Collection:

Collection is done upon request only by filling out a request form online or by contacting the Public Works Department at 514-457-6844.



Sofa and Mattresses:

Citizens can place upholstered materials out for collection during household waste pickups.



Sainte-Anne
de-Bellevue

109, rue Sainte-Anne
Sainte-Anne-de-Bellevue (Québec) H9X 1M2

Phone : 514 457-5500
Fax : 514 457-6087
Email : info@sadb.qc.ca

Guide for
thoughtful sorting

