

2026 Collection Schedule

January

S	M	T	W	T	F	S
				1	2	3
4	5	6	7	8	9	10
11	12	13	14	15	16	17
18	19	20	21	22	23	24
25	26	27	28	29	30	31

February

S	M	T	W	T	F	S
1	2	3	4	5	6	7
8	9	10	11	12	13	14
15	16	17	18	19	20	21
22	23	24	25	26	27	28

March

S	M	T	W	T	F	S
1	2	3	4	5	6	7
8	9	10	11	12	13	14
15	16	17	18	19	20	21
22	23	24	25	26	27	28
29	30	31				

April

S	M	T	W	T	F	S
			1	2	3	4
5	6	7	8	9	10	11
12	13	14	15	16	17	18
19	20	21	22	23	24	25
26	27	28	29	30		

May

S	M	T	W	T	F	S
					1	2
3	4	5	6	7	8	9
10	11	12	13	14	15	16
17	18	19	20	21	22	23
24	25	26	27	28	29	30
31						

June

S	M	T	W	T	F	S
	1	2	3	4	5	6
7	8	9	10	11	12	13
14	15	16	17	18	19	20
21	22	23	24	25	26	27
28	29	30				

July

S	M	T	W	T	F	S
			1	2	3	4
5	6	7	8	9	10	11
12	13	14	15	16	17	18
19	20	21	22	23	24	25
26	27	28	29	30	31	

August

S	M	T	W	T	F	S
						1
2	3	4	5	6	7	8
9	10	11	12	13	14	15
16	17	18	19	20	21	22
23	24	25	26	27	28	29
30	31					

September

S	M	T	W	T	F	S
		1	2	3	4	5
6	7	8	9	10	11	12
13	14	15	16	17	18	19
20	21	22	23	24	25	26
27	28	29	30			

October

S	M	T	W	T	F	S
				1	2	3
4	5	6	7	8	9	10
11	12	13	14	15	16	17
18	19	20	21	22	23	24
25	26	27	28	29	30	31

November

S	M	T	W	T	F	S
1	2	3	4	5	6	7
8	9	10	11	12	13	14
15	16	17	18	19	20	21
22	23	24	25	26	27	28
29	30					

December

S	M	T	W	T	F	S
		1	2	3	4	5
6	7	8	9	10	11	12
13	14	15	16	17	18	19
20	21	22	23	24	25	26
27	28	29	30	31		

Legend

- Christmas Tree Collection
- Domestic Waste Collection

- Recovered Waste
- Organic Waste

- Branches Collection
- Bulky Waste Collection



Small actions for big changes!

Household waste is now collected every two weeks at all times, as the City aims to implement solutions to optimize residual materials management and improve the environmental impact of our community.

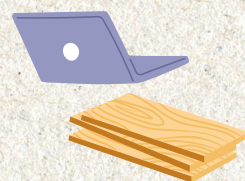
Our objective

In Sainte-Anne-de-Bellevue, only 43% of residual waste generated is recovered. By 2026, our goal is to have 70% of residual materials recycled.



Sofa and Mattresses:

Upholstered items will be collected with household waste.



Electronic devices, metal, paint, and any padded items:

Terra residents must submit a request on Voilà! to have their items collected. Requests will be processed within 48 hours.



Bulky waste:

Bulky waste, which includes all the materials listed in the reference guide, will be collected on the first Friday every two months.



Sainte-Anne
de-Bellevue

109, rue Sainte-Anne
Sainte-Anne-de-Bellevue (Québec) H9X 1M2

Phone : 514 457-5500
Fax : 514 457-6087
Email : info@sadb.qc.ca

Guide for
thoughtful sorting

