

# Centre Harpell Grande Salle





# Centre Harpell

## Salle du 2e étage



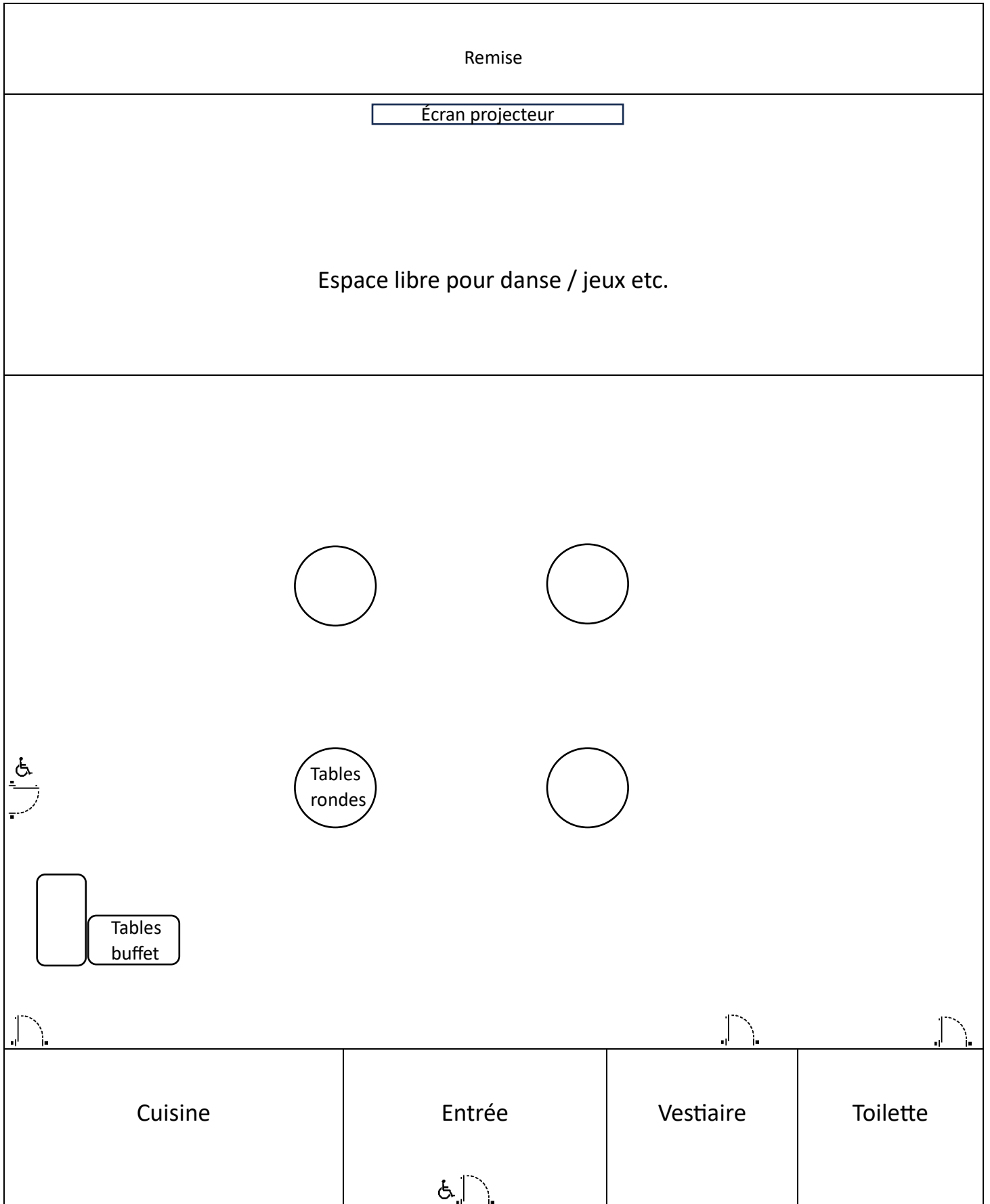


# Parc Aumais chalet Peter-Williamson

## Salle de réception

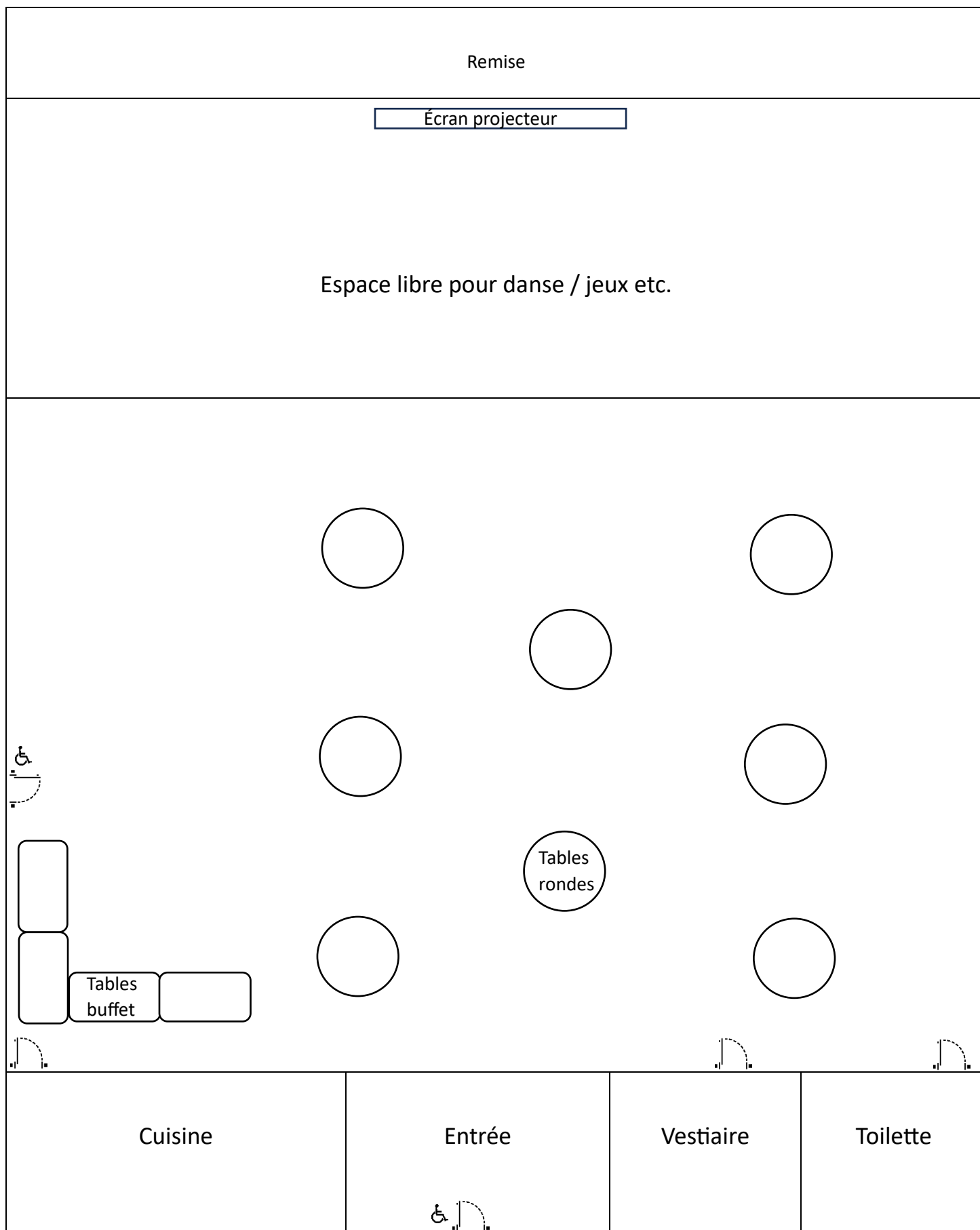


## Plan de salle A (32 personnes)



# Centre Harpell

## Plan de salle B (64 personnes)



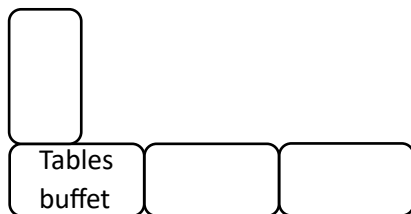
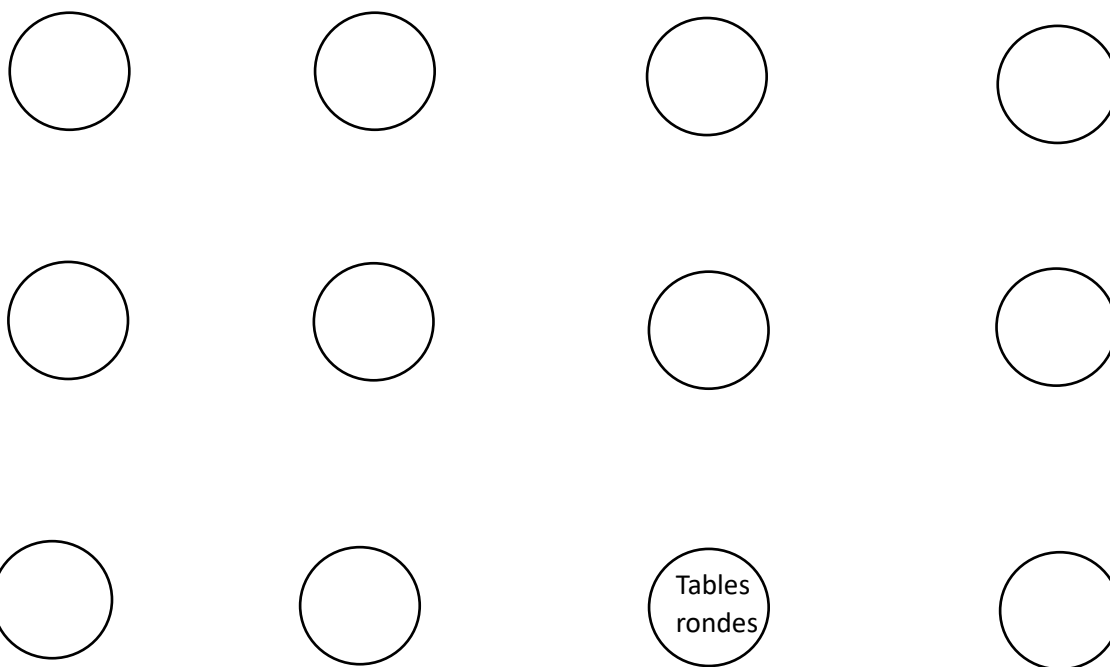
# Centre Harpell

## Plan de salle C (96 personnes)

Remise

Écran projecteur

Espace libre pour danse / jeux etc.



Cuisine

Entrée

Vestiaire

Toilette



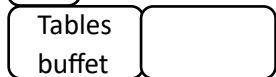
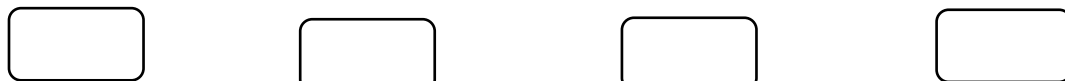
# Centre Harpell

## Plan de salle D (120 personnes)

Remise

Écran projecteur

Espace libre pour danse / jeux etc.



Cuisine

Entrée

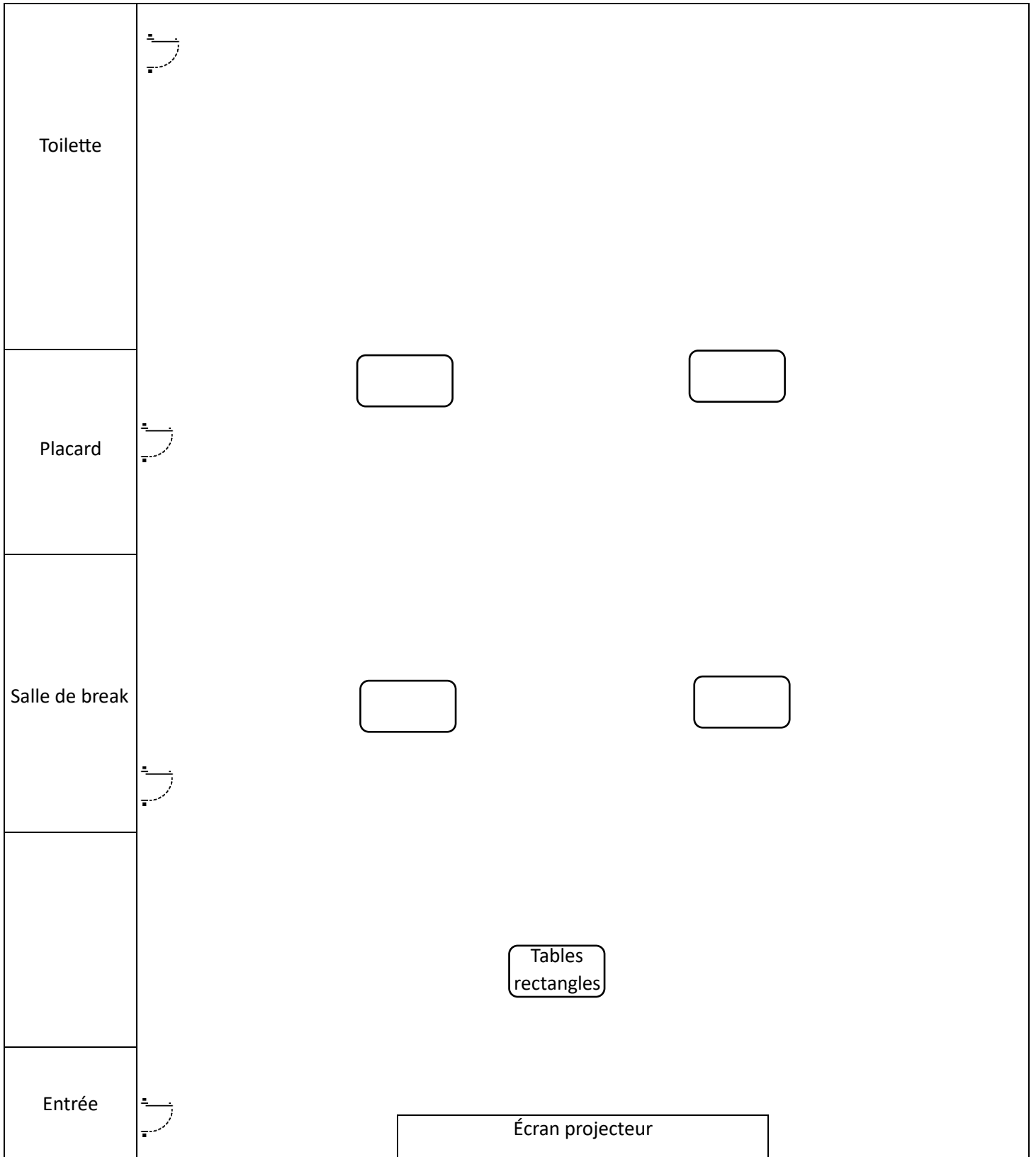
Vestiaire

Toilette



# Centre Harpell 2<sup>e</sup> étage

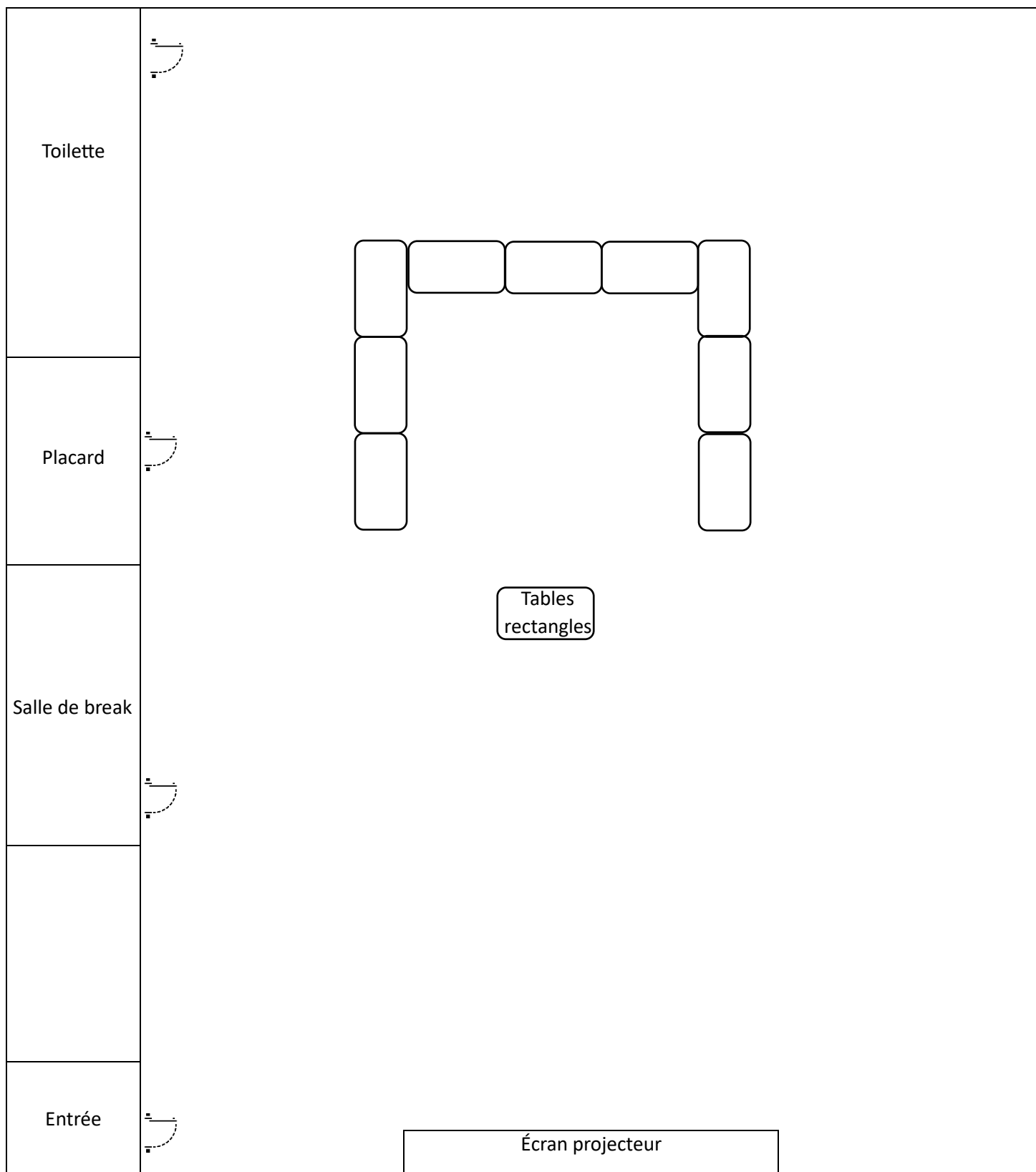
## Plan de salle A (10 personnes)





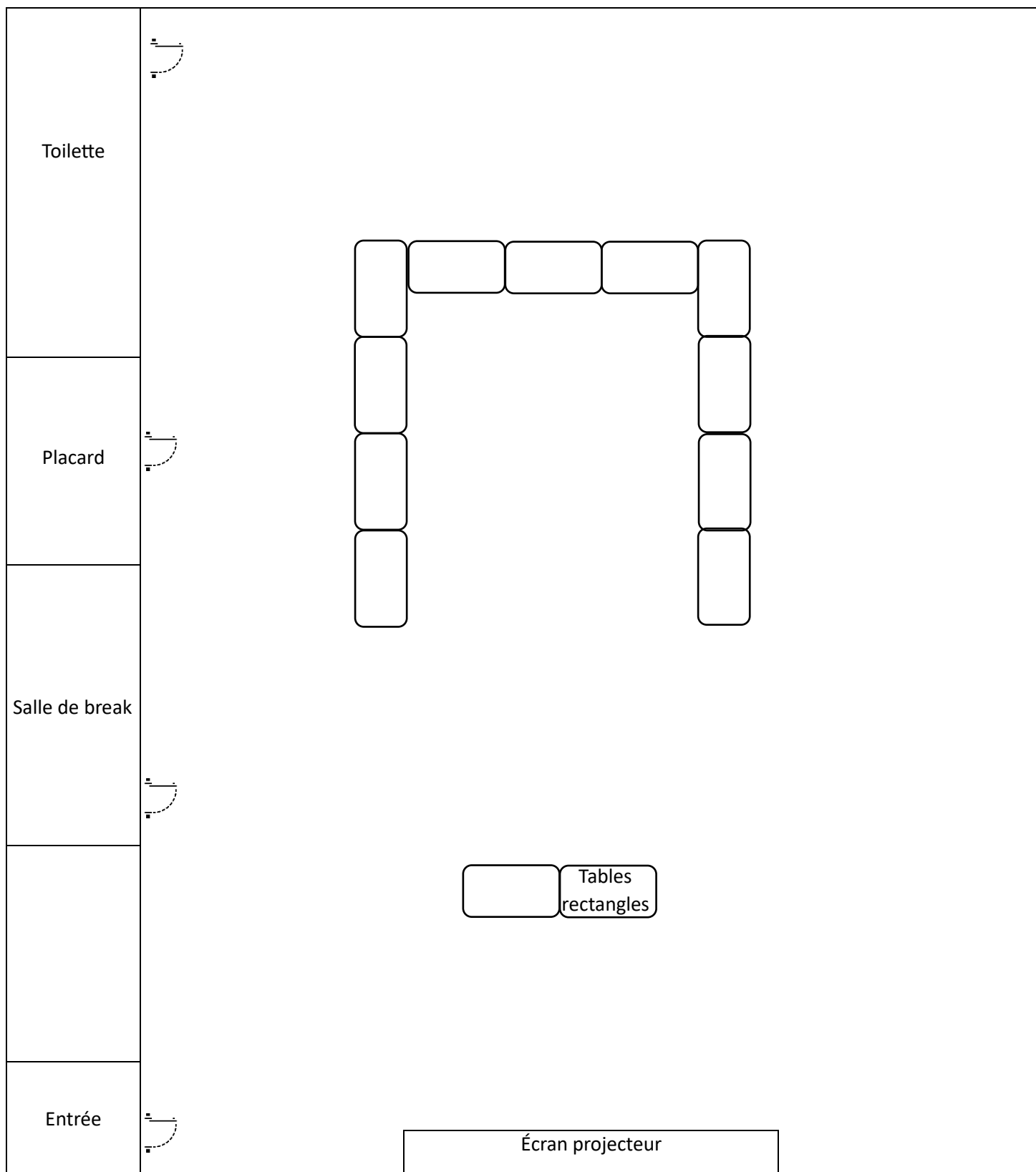
# Centre Harpell 2<sup>e</sup> étage

## Plan de salle B (20 personnes)



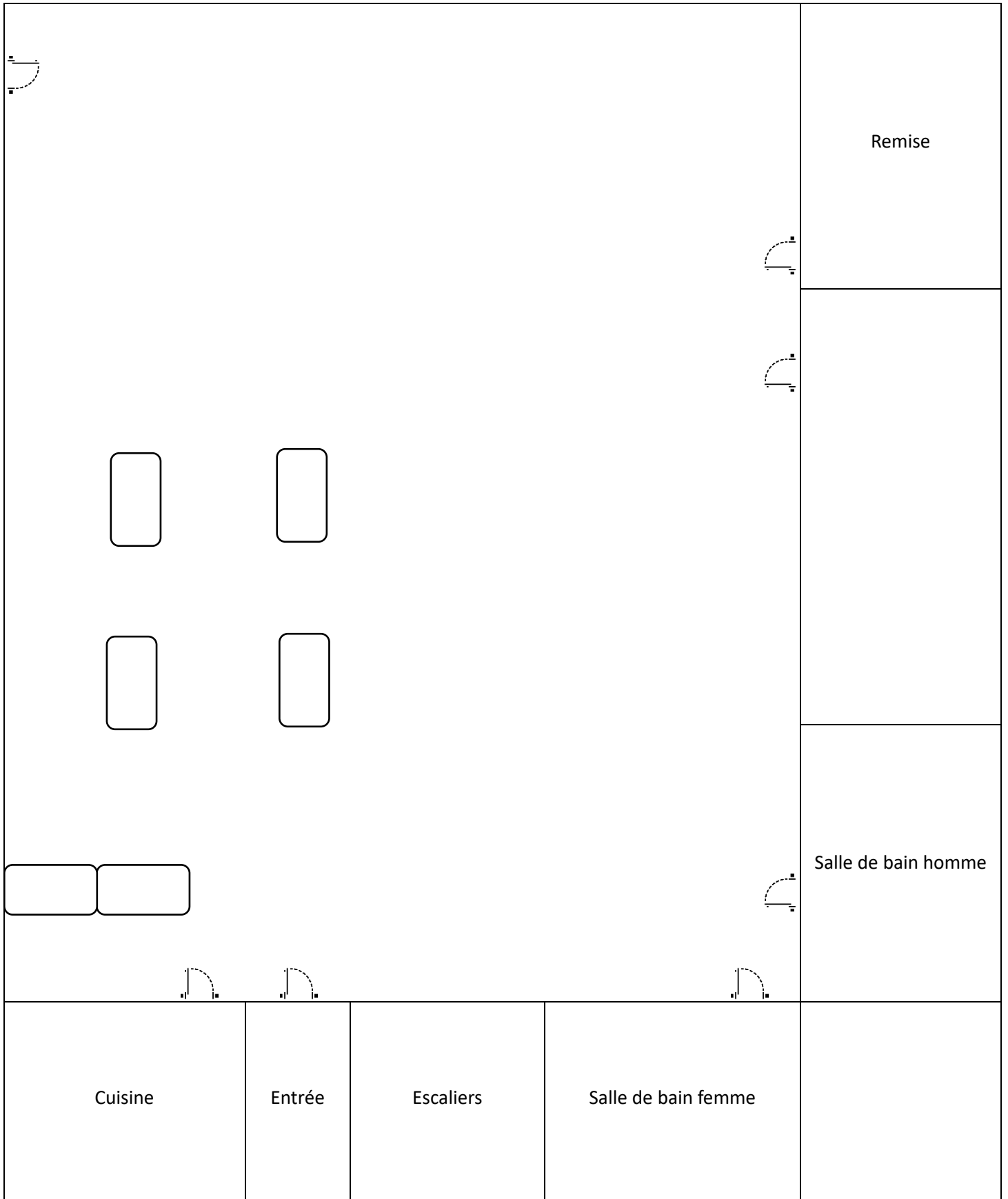
# Centre Harpell 2<sup>e</sup> étage

## Plan de salle C (30 personnes)



# Chalet Peter-Williamson

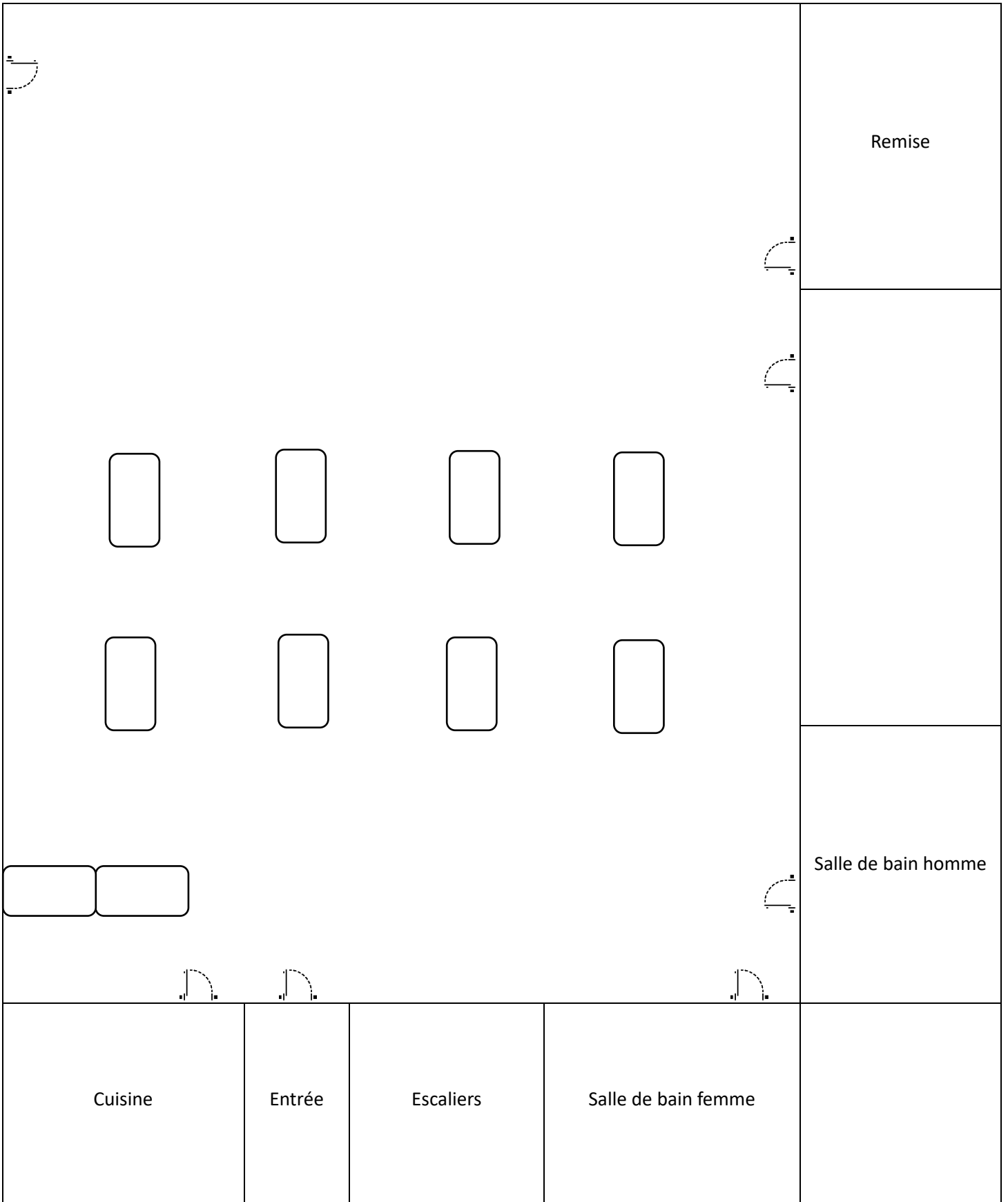
## Plan de salle A (24 personnes)





# Chalet Peter-Williamson

## Plan de salle B (48 personnes)



# Chalet Peter-Williamson

## Plan de salle C (72 personnes)

